

RIVERSEND SUBDIVISION

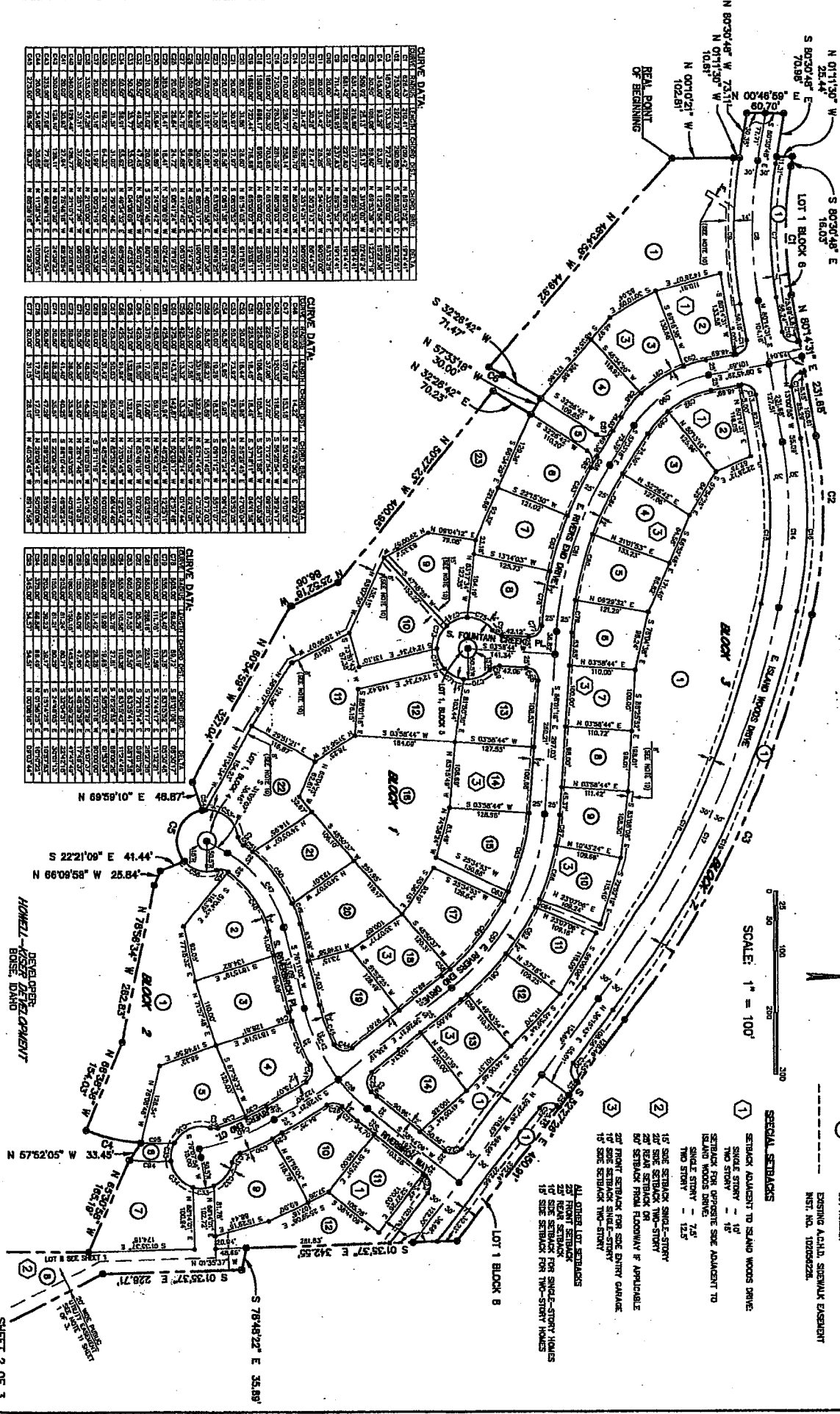
PLAT SHOWING
EAGLE, IDAHO
• HUBBLE ENGINEERING, INC. •
MERIDIAN, IDAHO
2002



SCALE: 1" = 100'

- LEGEND**
- FOUND BRASS CAP OR ALUMINUM CAP
 - SET 5/8" X 3/4" IRON PIN WITH PLASTIC CAP
 - SET 1/2" X 24" IRON PIN WITH PLASTIC CAP
 - - - PROPERTY BOUNDARY
 - - - EASEMENT AS NOTED
 - ① LOT NUMBER
 - - - EXISTING ACAD. SIDEWALK EASEMENT
 - REF. NO. 120682226

- SERIAL SETBACKS**
- ① SETBACK ADJACENT TO ISLAND WOODS DRIVE
 - ② SINGLE STORY - 10'
 - ③ SETBACK FOR OPPOSITE SIDE ADJACENT TO ISLAND WOODS DRIVE
 - ④ SINGLE STORY - 12.5'
 - ⑤ SIDE SETBACK SINGLE-STORY
 - ⑥ 20' REAR SETBACK OR
 - ⑦ 80' SETBACK FROM FLOORWAY IF APPLICABLE
 - ⑧ SIDE SETBACK FOR SIDE ENTRY GARAGE
 - ⑨ SIDE SETBACK SINGLE-STORY
 - ⑩ SIDE SETBACK TWO-STORY
 - ⑪ ALL OTHER LOT SETBACKS
 - ⑫ 20' REAR SETBACK
 - ⑬ 10' SIDE SETBACK FOR SINGLE-STORY HOMES
 - ⑭ 15' SIDE SETBACK FOR TWO-STORY HOMES



CURVE DATA

STATION	BEARING	DISTANCE	CHORD BEARING	CHORD DISTANCE	ARC DISTANCE	ANGLE
1	N 01°11'30" W	26.44'				
2	S 80°30'48" E	70.98'				
3	N 01°11'30" W	10.81'				
4	N 07°02'11" W	102.81'				
5	N 80°30'48" E	16.03'				
6	N 80°14'31" E	231.85'				
7	N 57°33'19" W	71.47'				
8	N 32°28'42" E	70.25'				
9	N 50°27'35" W	400.83'				
10	N 25°57'18" W	98.78'				
11	N 62°42'34" W	251.12'				
12	N 69°55'10" E	48.87'				
13	S 22°21'09" E	41.44'				
14	N 66°08'58" W	25.84'				
15	N 78°56'24" W	282.53'				
16	N 66°30'36" W	164.00'				
17	N 45°30'50" W	182.19'				
18	N 57°52'05" W	118.93'				
19	S 01°35'37" E	242.32'				
20	S 78°48'22" E	35.89'				
21	S 01°35'37" E	228.71'				
22	S 01°35'37" E	228.71'				
23	S 01°35'37" E	228.71'				
24	S 01°35'37" E	228.71'				
25	S 01°35'37" E	228.71'				
26	S 01°35'37" E	228.71'				
27	S 01°35'37" E	228.71'				
28	S 01°35'37" E	228.71'				
29	S 01°35'37" E	228.71'				
30	S 01°35'37" E	228.71'				
31	S 01°35'37" E	228.71'				
32	S 01°35'37" E	228.71'				
33	S 01°35'37" E	228.71'				
34	S 01°35'37" E	228.71'				

CURVE DATA

STATION	BEARING	DISTANCE	CHORD BEARING	CHORD DISTANCE	ARC DISTANCE	ANGLE
1	N 01°11'30" W	26.44'				
2	S 80°30'48" E	70.98'				
3	N 01°11'30" W	10.81'				
4	N 07°02'11" W	102.81'				
5	N 80°30'48" E	16.03'				
6	N 80°14'31" E	231.85'				
7	N 57°33'19" W	71.47'				
8	N 32°28'42" E	70.25'				
9	N 50°27'35" W	400.83'				
10	N 25°57'18" W	98.78'				
11	N 62°42'34" W	251.12'				
12	N 69°55'10" E	48.87'				
13	S 22°21'09" E	41.44'				
14	N 66°08'58" W	25.84'				
15	N 78°56'24" W	282.53'				
16	N 66°30'36" W	164.00'				
17	N 45°30'50" W	182.19'				
18	N 57°52'05" W	118.93'				
19	S 01°35'37" E	242.32'				
20	S 78°48'22" E	35.89'				
21	S 01°35'37" E	228.71'				
22	S 01°35'37" E	228.71'				
23	S 01°35'37" E	228.71'				
24	S 01°35'37" E	228.71'				
25	S 01°35'37" E	228.71'				
26	S 01°35'37" E	228.71'				
27	S 01°35'37" E	228.71'				
28	S 01°35'37" E	228.71'				
29	S 01°35'37" E	228.71'				
30	S 01°35'37" E	228.71'				
31	S 01°35'37" E	228.71'				
32	S 01°35'37" E	228.71'				
33	S 01°35'37" E	228.71'				
34	S 01°35'37" E	228.71'				

CURVE DATA

STATION	BEARING	DISTANCE	CHORD BEARING	CHORD DISTANCE	ARC DISTANCE	ANGLE
1	N 01°11'30" W	26.44'				
2	S 80°30'48" E	70.98'				
3	N 01°11'30" W	10.81'				
4	N 07°02'11" W	102.81'				
5	N 80°30'48" E	16.03'				
6	N 80°14'31" E	231.85'				
7	N 57°33'19" W	71.47'				
8	N 32°28'42" E	70.25'				
9	N 50°27'35" W	400.83'				
10	N 25°57'18" W	98.78'				
11	N 62°42'34" W	251.12'				
12	N 69°55'10" E	48.87'				
13	S 22°21'09" E	41.44'				
14	N 66°08'58" W	25.84'				
15	N 78°56'24" W	282.53'				
16	N 66°30'36" W	164.00'				
17	N 45°30'50" W	182.19'				
18	N 57°52'05" W	118.93'				
19	S 01°35'37" E	242.32'				
20	S 78°48'22" E	35.89'				
21	S 01°35'37" E	228.71'				
22	S 01°35'37" E	228.71'				
23	S 01°35'37" E	228.71'				
24	S 01°35'37" E	228.71'				
25	S 01°35'37" E	228.71'				
26	S 01°35'37" E	228.71'				
27	S 01°35'37" E	228.71'				
28	S 01°35'37" E	228.71'				
29	S 01°35'37" E	228.71'				
30	S 01°35'37" E	228.71'				
31	S 01°35'37" E	228.71'				
32	S 01°35'37" E	228.71'				
33	S 01°35'37" E	228.71'				
34	S 01°35'37" E	228.71'				

DEVELOPER: HOWELL-DEER DEVELOPMENT
BOISE, IDAHO
SHEET 2 OF 3